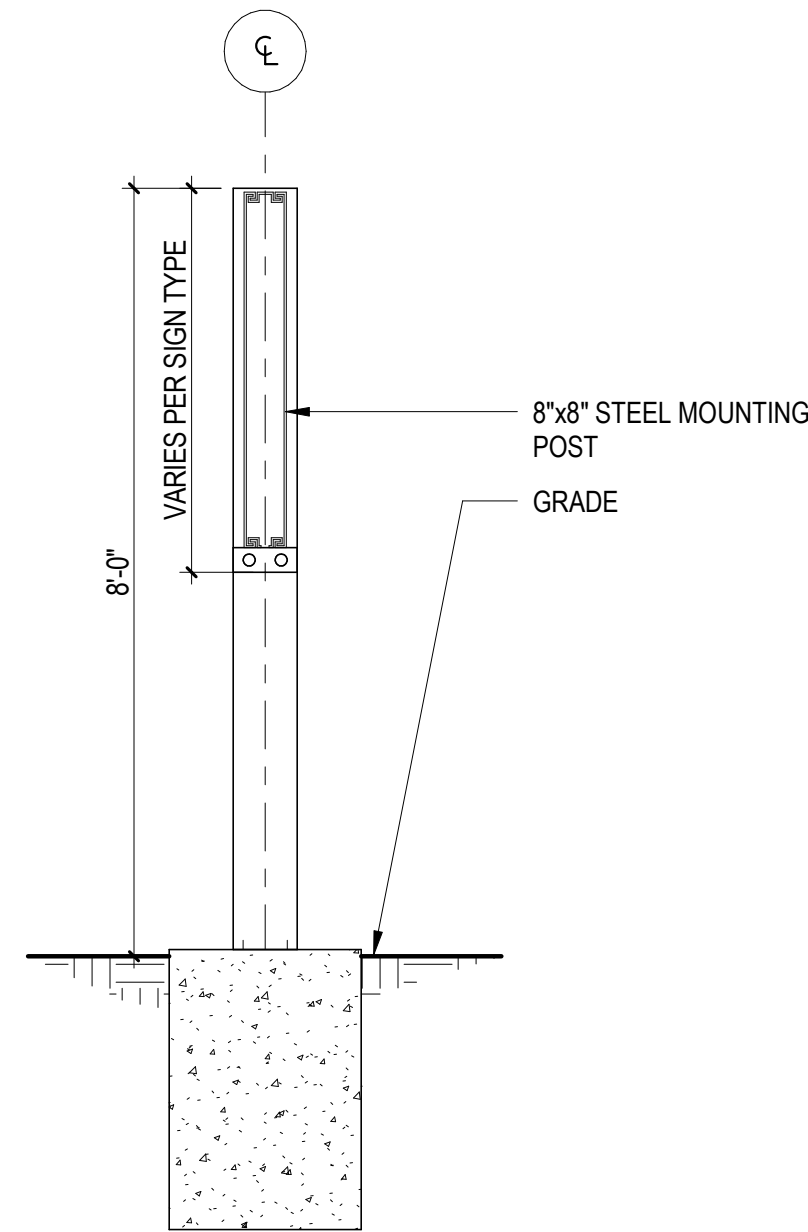
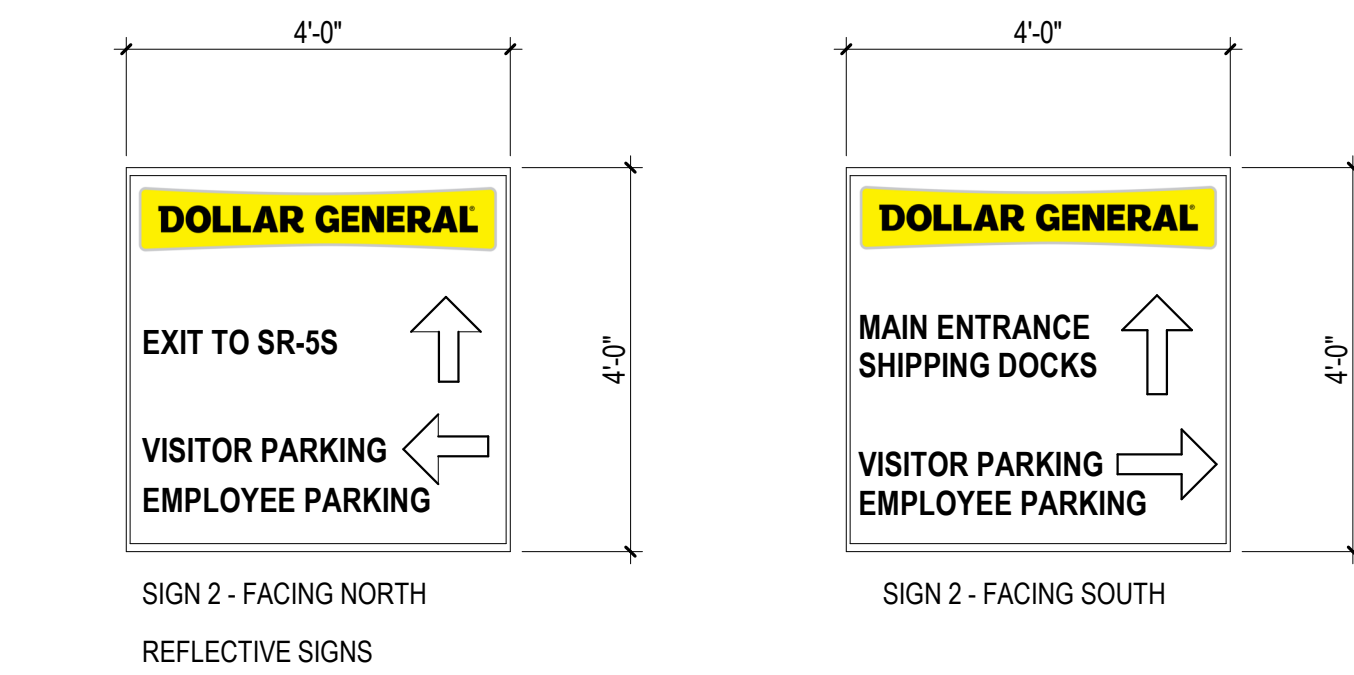


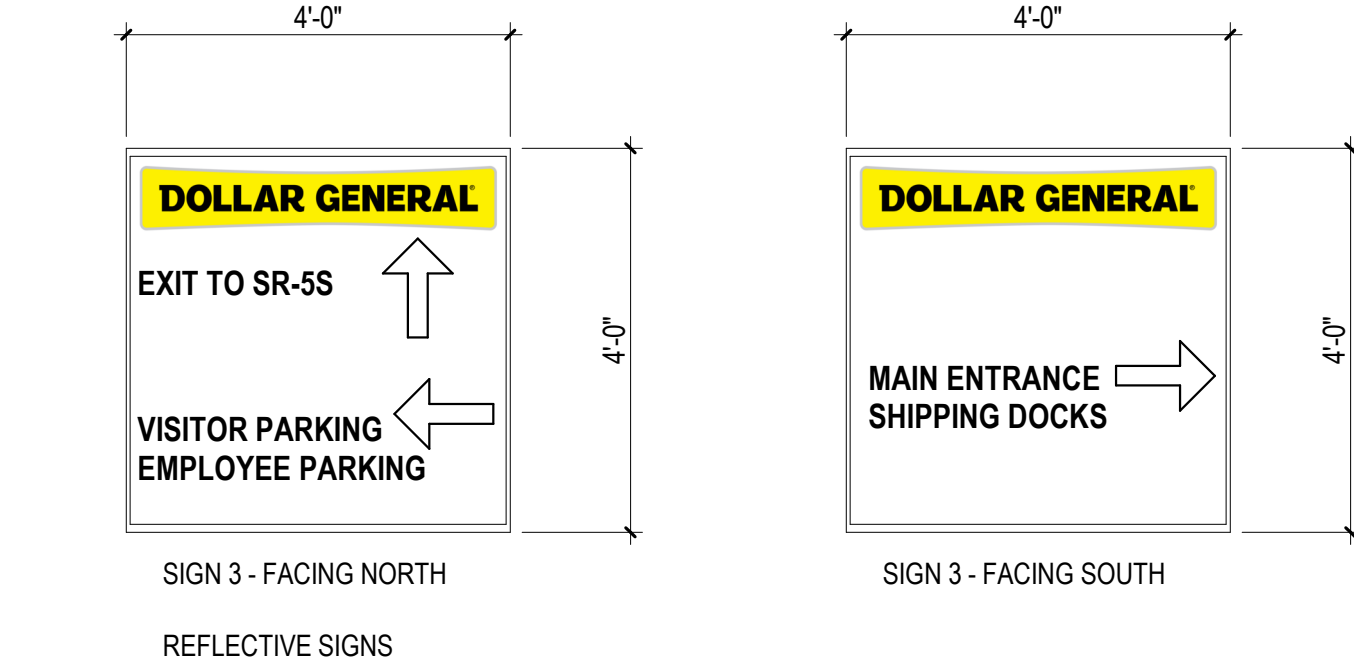
F4 MONUMENT SIGN
1A10.2 1/2" = 1'-0"



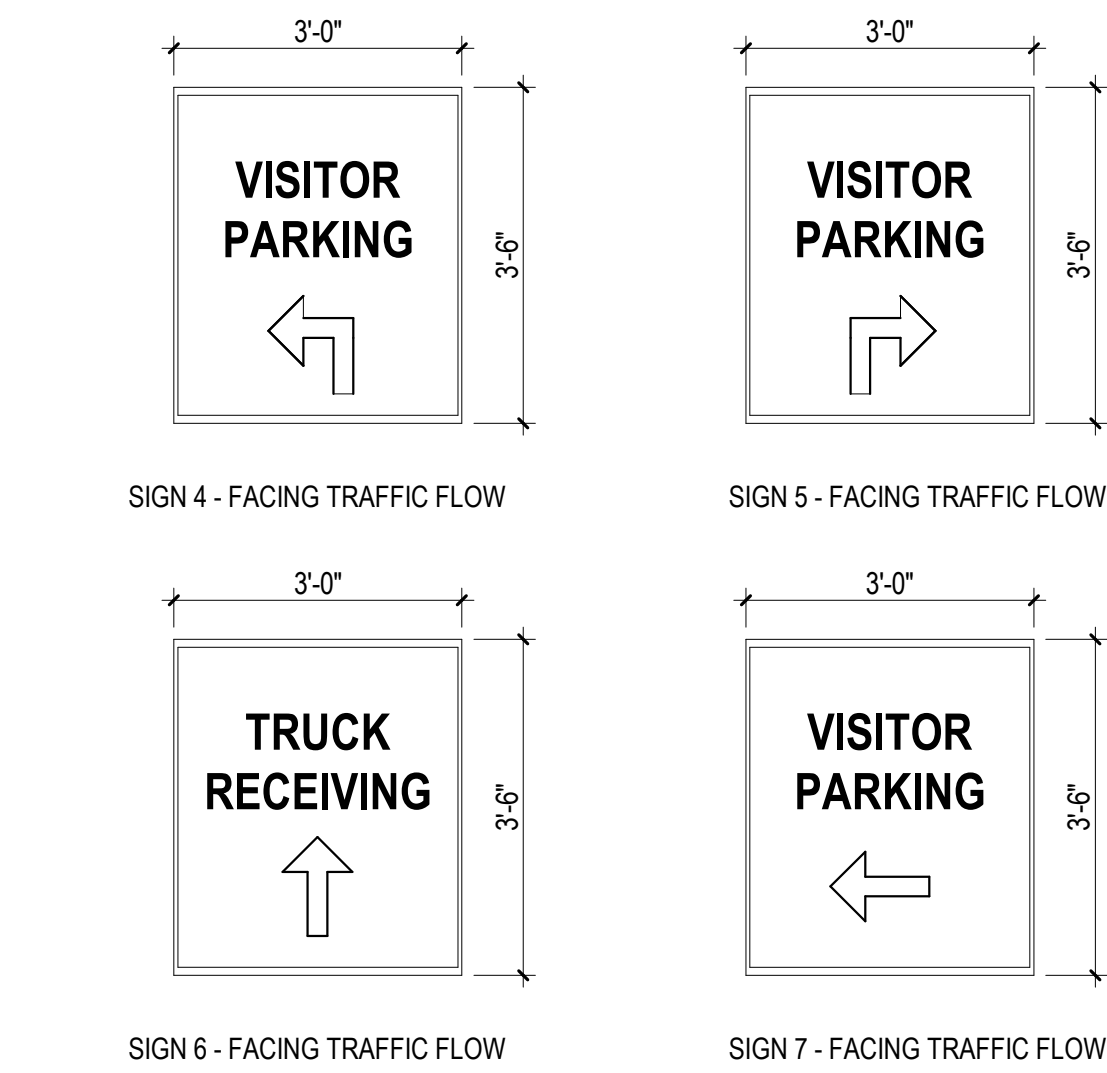
D4 DIRECTIONAL SIGN - SECTION
1A10.2 1/2" = 1'-0"



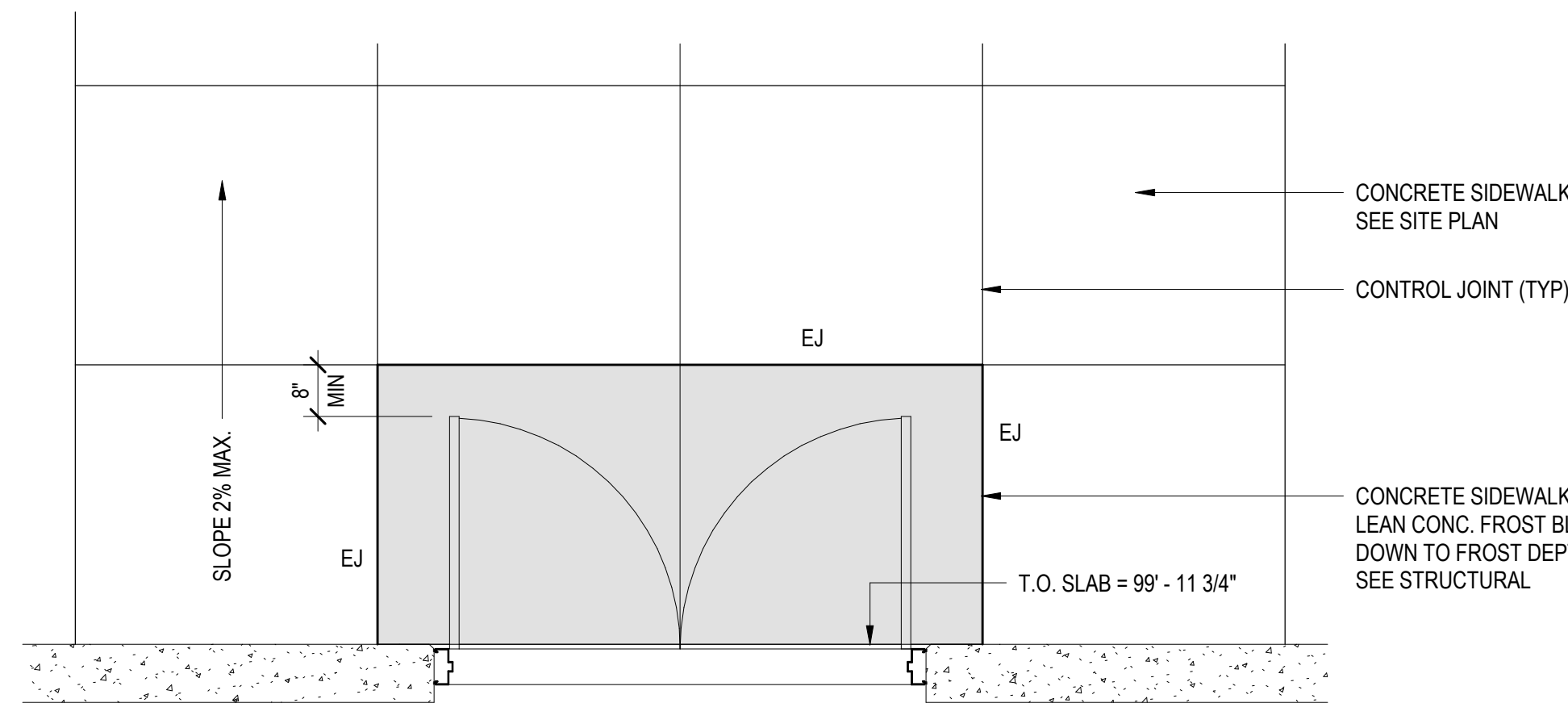
B5 DIRECTIONAL SIGN - SHIPPING
1A10.2 1/2" = 1'-0"



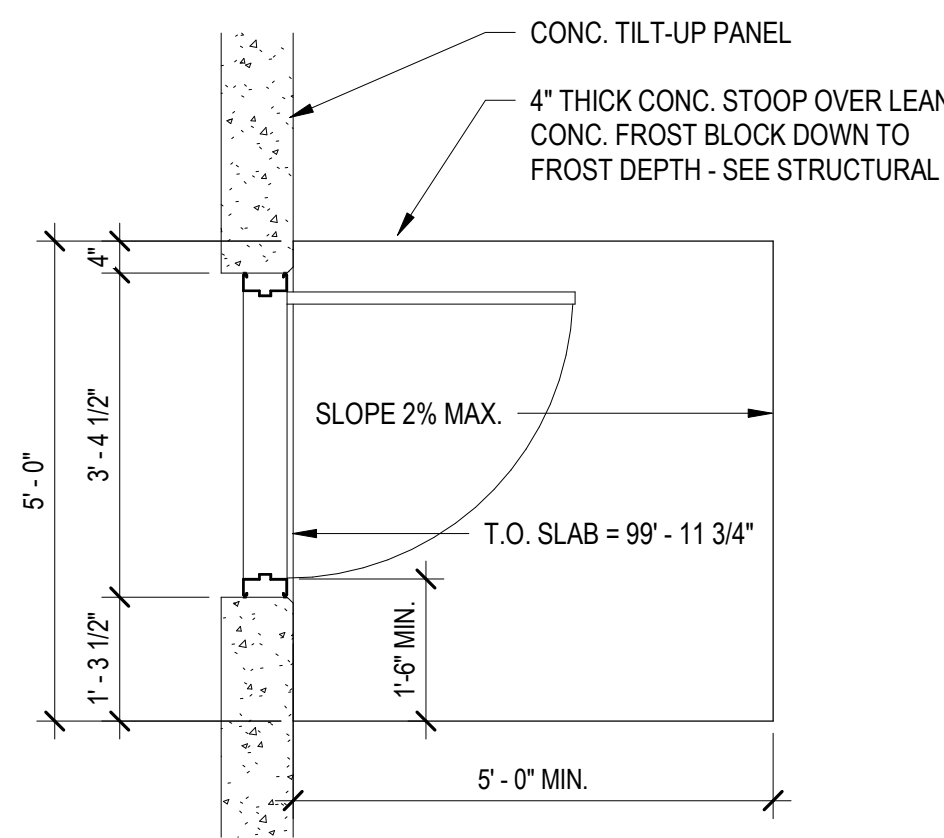
B4 DIRECTIONAL SIGN - SHIPPING
1A10.2 1/2" = 1'-0"



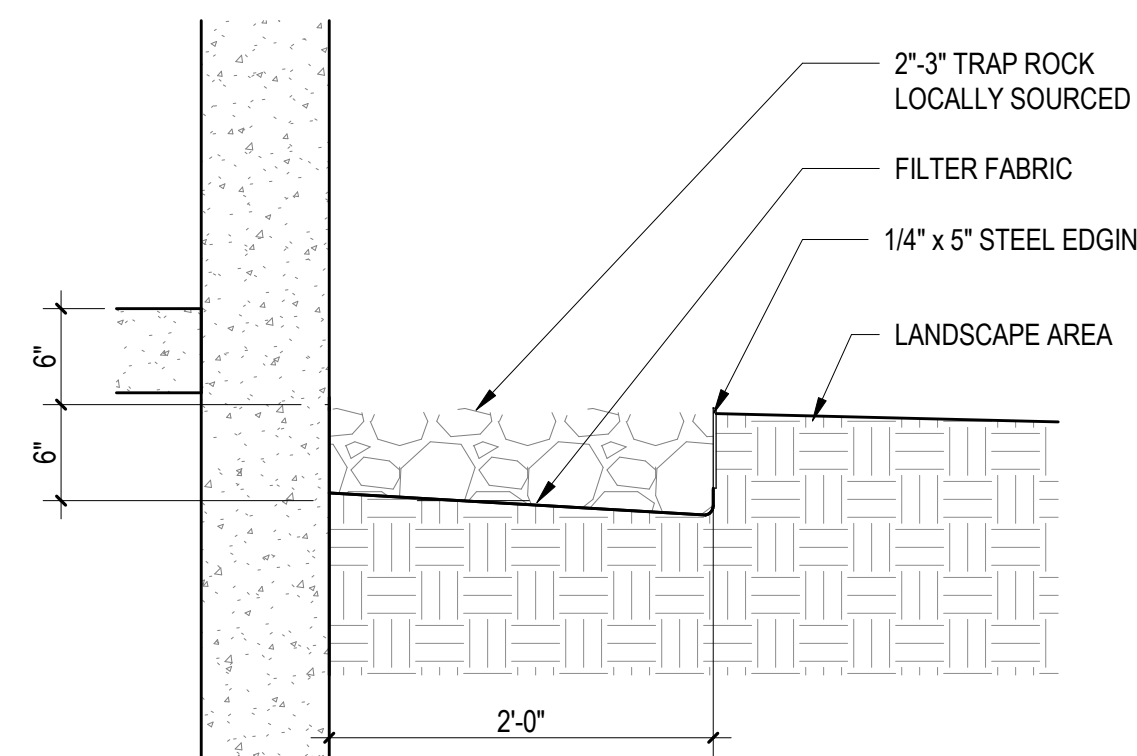
A4 DIRECTIONAL SIGNS
1A10.2 1/2" = 1'-0"



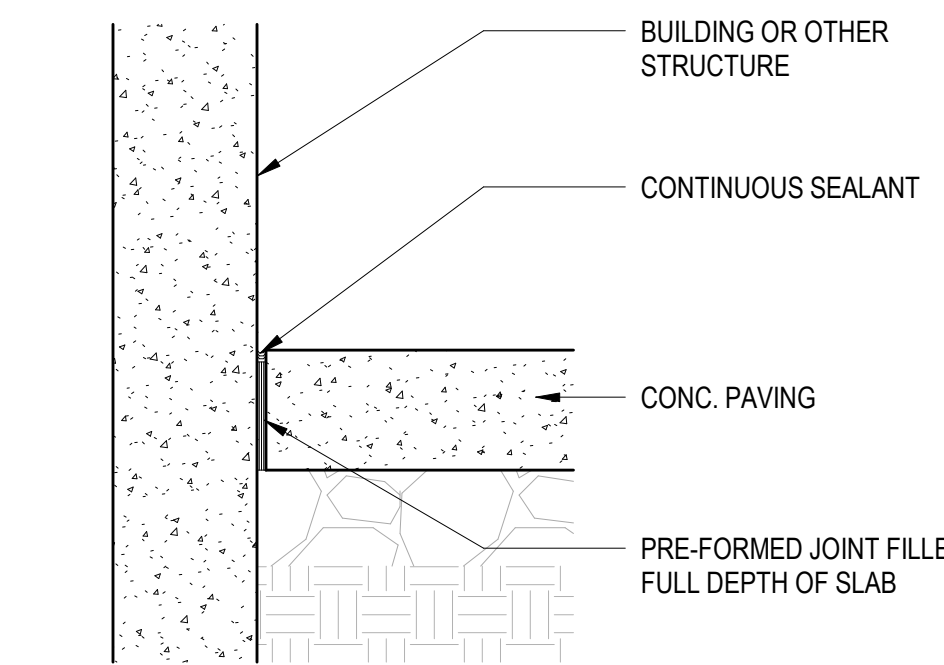
B3 HEAVE SLAB DETAIL
1A10.2 1/2" = 1'-0"



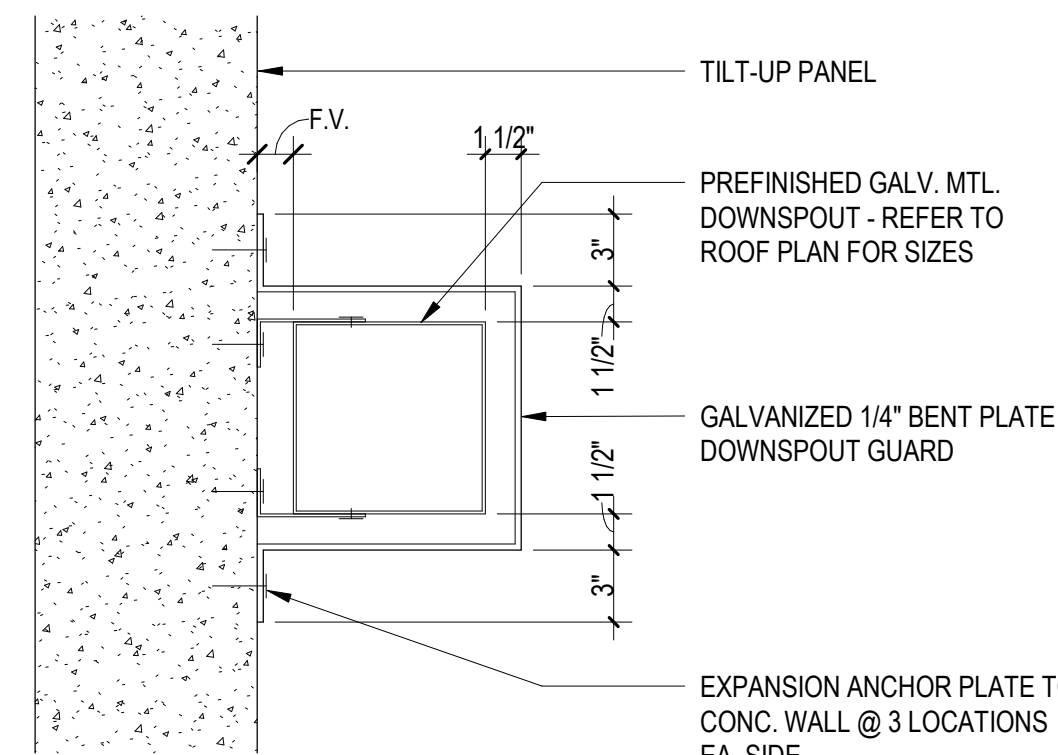
A3 CONCRETE STOOP DETAIL
1A10.2 1/2" = 1'-0"



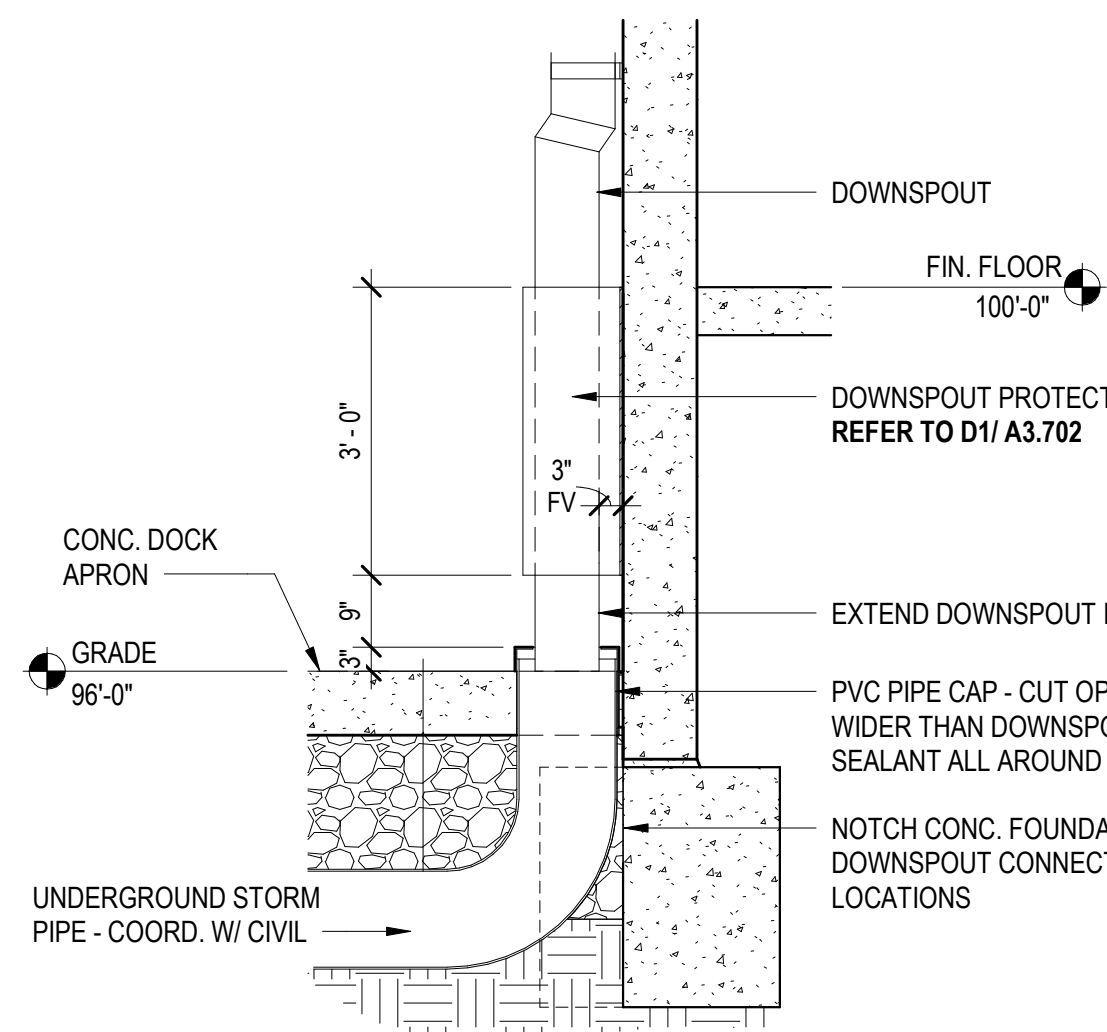
B2 GRAVEL MOW STRIP DETAIL
1A10.2 1" = 1'-0"



A2 PAVEMENT ISOLATION JOINT
1A10.2 1 1/2" = 1'-0"



B1 DOWNSPOUT PROTECTION PLAN
1A10.2 1 1/2" = 1'-0"



A1 DOWNSPOUT DRAINAGE/ PROTECTION DETAIL
1A10.2 1/2" = 1'-0"



CLAYCO
THE ART & SCIENCE OF BUILDING
2199 INNERBELT BUSINESS CENTER DRIVE
ST. LOUIS, MISSOURI 63114
PH: 314.429.5100 FAX: 314.429.3137

FS ARCHITECTURE, PC
A PROFESSIONAL CORPORATION
2199 INNERBELT BUSINESS CENTER DRIVE
ST. LOUIS, MISSOURI 63114
PH: 314.429.5100

DOLLAR GENERAL AMSTERDAM

COLD STORAGE BUILDING + TMF EXPANSION
AMSTERDAM, NEW YORK

DRAWING ISSUE	
DESCRIPTION	DATE
Schematic Design - Start	6/10/2022
Schematic Design - End	9/02/2022
Design Development - Start	9/09/2022
30% - Review Set	9/23/2022
60% - Review Set	11/16/2022
90% - Review Set	12/09/2022
PERMIT ISSUE	08/11/2023

BUILDING MAP

DRAWING TITLE
SITE DETAILS

DRAWING NO.
1A10.2

Job # 22-006882